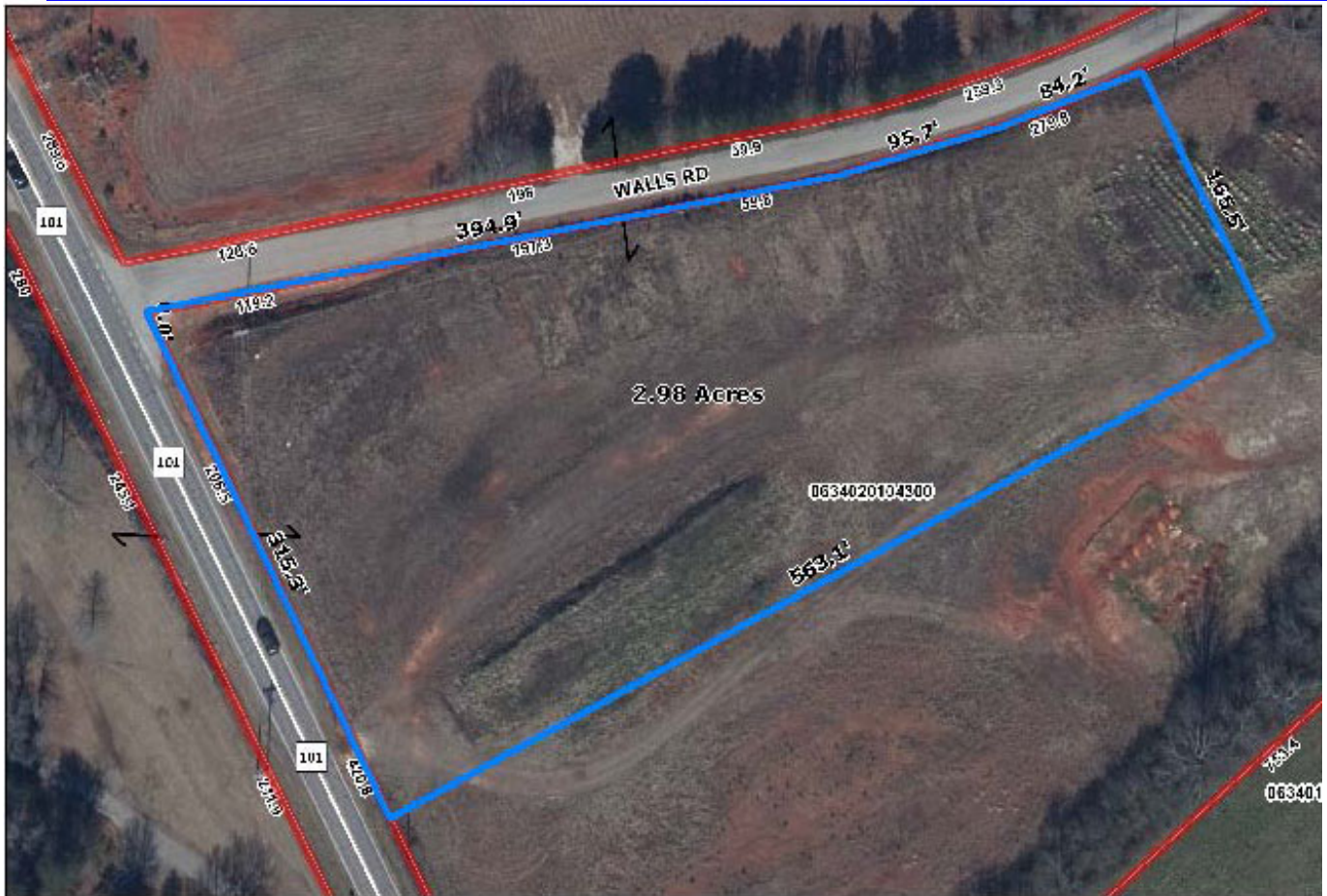


2.98 Acres N. Highway 101 Northern Greenville County



2.98 acres of unimproved land in northern Greenville County. Mostly open parcel with about 300' feet of frontage on N. Hwy 101. Located in the Blue Ridge area north of Greer, S. C., near Lake Robinson and Blue Ridge Middle School. Suitable for commercial development or residential subdivision. Additional acreage is available.



\$300,000.

Contact: Harold James

Cell: 864 420 0266

Office: 877-7456

Email: hjames@jamesagency.net

216 N. Main Street, Greer, S.C. 29650

Information contained herein is believed to be correct, however no guarantee of accuracy is made. Interested parties should verify all data.